



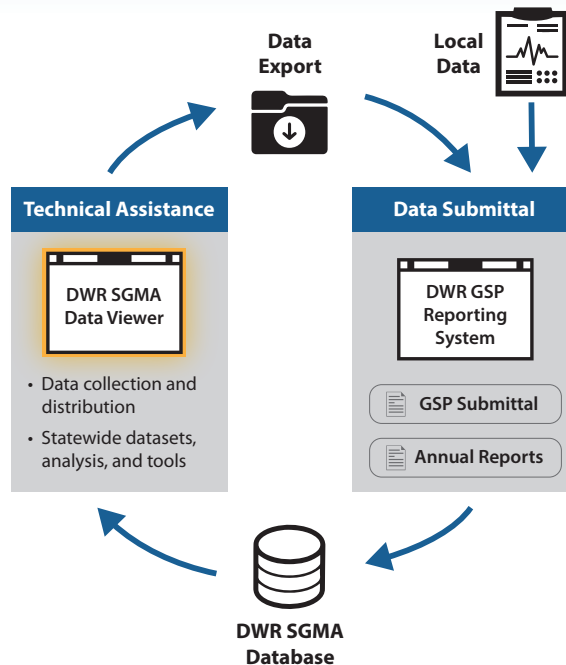
SGMA Data Viewer

The purpose of the [SGMA Data Viewer](#) is to compile and display regional and statewide groundwater information so Groundwater Sustainability Agencies (GSAs) and related stakeholders can efficiently access this information during Groundwater Sustainability Plan (GSP) development and implementation.

Objective

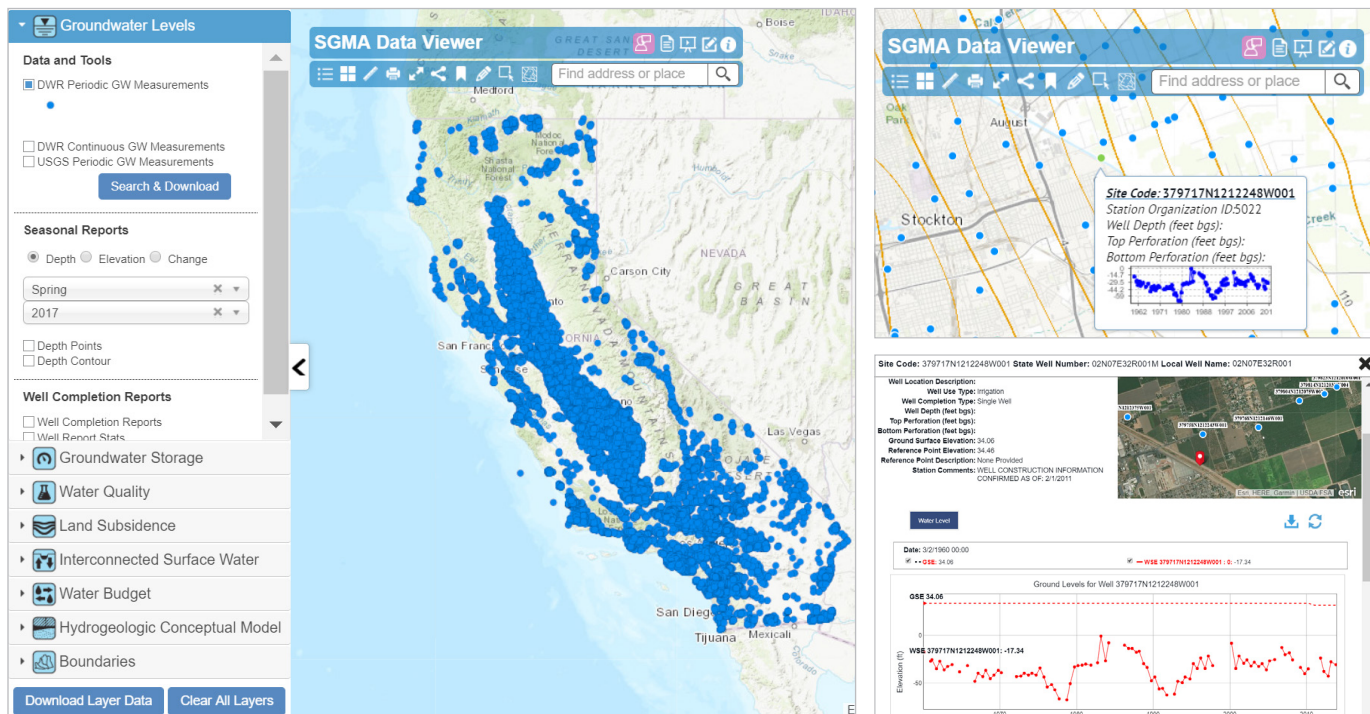
Data access is and will continue to be an important component of successful GSP development and SGMA implementation. Currently, SGMA-related data are managed and stored by a variety of local, state, and federal agencies making it difficult to find.

The [SGMA Data Viewer](#) integrates data from various sources to provide GSAs and the public the access to query, visualize, and download SGMA-related data. The SGMA Data Viewer provides data mapped to SGMA's sustainability indicators.



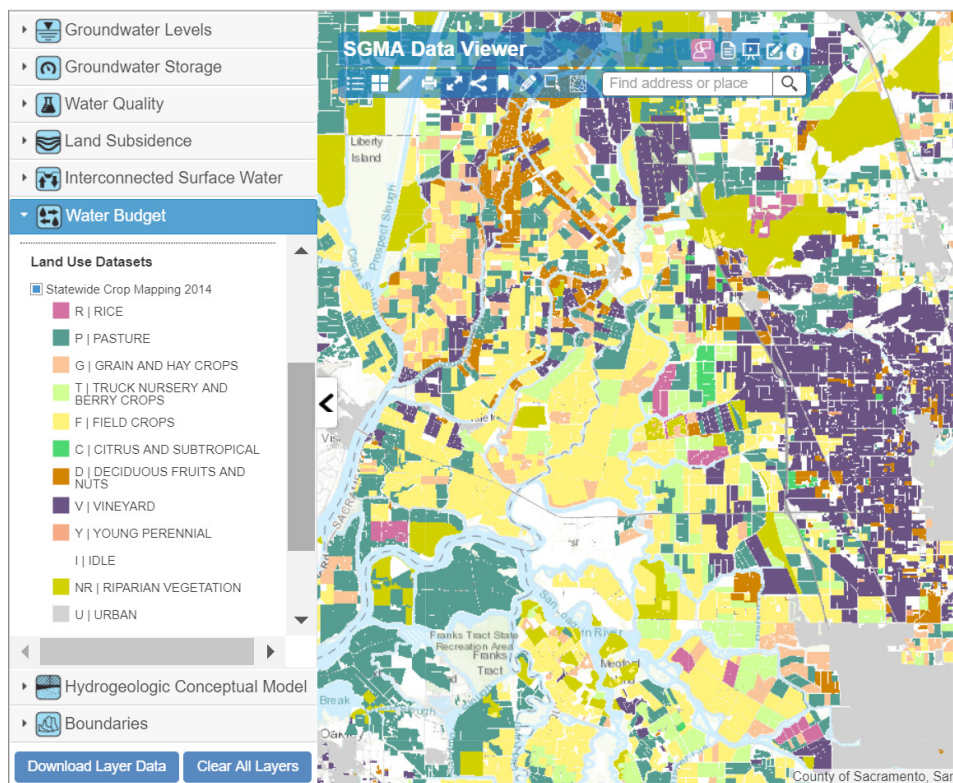
GSAs can use information from the viewer to develop GSPs. Data submitted to DWR for GSPs and annual reports will be added to the Viewer for future use.

<https://sgma.water.ca.gov/sgmadataviewer>



Benefits of the SGMA Data Viewer

- **Compilation of Existing Statewide Coverage:** The SGMA Data Viewer provides access to many existing SGMA-related datasets that before were hard to find.
- **Supports GSP Development:** The SGMA Data Viewer integrates data from DWR and other agencies into a common, well organized, and accessible format that will provide benefit to GSAs as they develop and implement their GSPs.
- **Reduced Cost to GSAs and Land Owners:** Easily accessible SGMA data provided by DWR will save GSAs time and money, which in turn will reduce costs to land owners and other groundwater users in the basins.
- **Increases data sharing among GSAs:** Data submitted to DWR through the SGMA Portal will also be accessible through the SGMA Data Viewer, which makes it easy for GSAs to view and download data submitted by GSAs within the basin and in adjacent basins.
- **Data Access and Download:** GIS data available on the SGMA data viewer are available for download in ESRI shape file format. Data retrieved from databases such as groundwater level data are downloadable in Excel or comma-separated values (CSV) file format.



Contact and Additional Information

For more information or questions on DWR's technical assistance, contact Steven Springhorn at Steven.Springhorn@water.ca.gov

SGMA Data Viewer

<https://sgma.water.ca.gov/sgmadataviewer>

DWR SGMA Data and Tools Webpage

<https://www.water.ca.gov/Programs/Groundwater-Management/Data-and-Tools>



California Department of Water Resources
1416 Ninth Street
P.O. Box 942836
Sacramento, CA 94236-0001
<http://www.water.ca.gov>