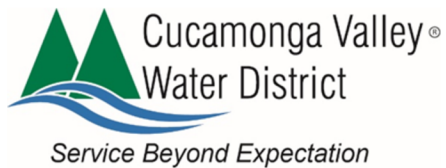
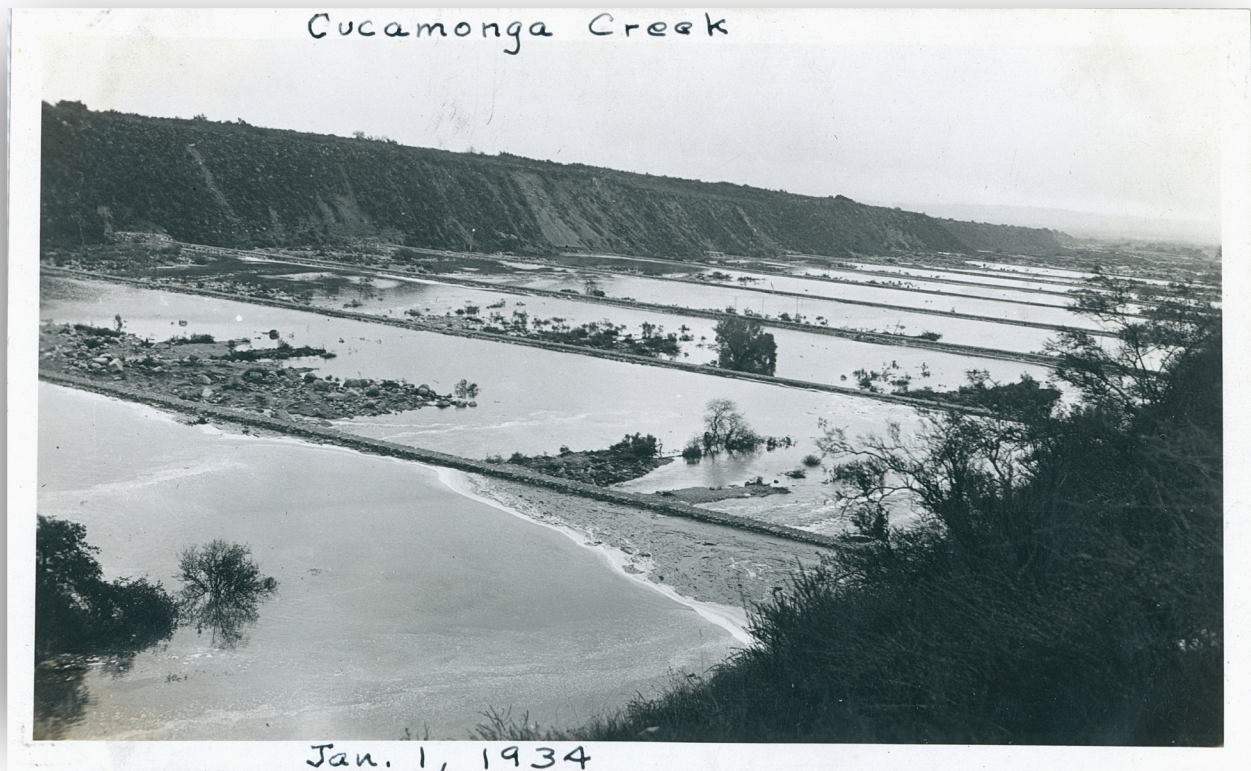


CUCAMONGA BASIN ANNUAL REPORT

WY2024



WEST END
Consolidated Water Company

Background

This annual monitoring report has been submitted on behalf of the Cucamonga Adjudicated Basin for Water Year 2024 (October 1, 2023 through September 30, 2024). The wells within the boundary of this basin belong to Cucamonga Valley Water District (CVWD), San Antonio Water Company (SAWCo), and the City of Upland. This report has been completed using data and information provided by the agencies and submitted for approval through the California Department of Water Resources (DWR) Adjudicated Basins Annual Reporting System.

Water Data (Water Year 2024)

Data and digital documents will be submitted for Water Year 2024. The DWR Adjudicated Basin Annual Reporting System language will be in ***bold italics***, submittal information will have the preface “**Cuc Basin Response:**” in bold, and any required information will be denoted with a red asterisk (*).

Groundwater Level

(a) Is water level data submitted to the CASGEM Program?

Cuc Basin Response: Yes

(b) Does this watermaster collect or receive additional groundwater levels?

Cuc Basin Response: Yes

***If the answer to (b) is “YES”:** If you are the CASGEM Monitoring Entity, please log into the CASGEM Site and add your additional wells as “Voluntary” wells and enter data as you do for CASGEM wells. If you are not the CASGEM Monitoring Entity, and do not have access to contribute to the CASGEM site, please download, and fill out the two spreadsheet templates and upload them in the space for “additional documents” in Appendix A – Data Tables& Required Documents.

Cuc Basin Response: Consistent with the Water Year 2023 report for the Cucamonga Basin, the data for wells that are not reported through CASGEM will not be loaded as “voluntary” wells. Legal counsel to CVWD determined the submission of this data not required.

(c) Does watermaster measure groundwater levels?

Cuc Basin Response: Yes

***If the answer to (c) is “YES”:** Please download and fill out the two spreadsheet templates and upload them in the space for “additional documents” in Appendix A.

Cuc Basin Response: Consistent with the Water Year 2023 report for the Cucamonga Basin, the data for wells that are not reported through CASGEM will not be loaded as “voluntary” wells. Legal counsel to CVWD determined the submission of this data not required.

Groundwater Use

(a) Total Groundwater Extraction in acre feet (AF)

Cuc Basin Response: 11,960 (see Table 1 below)

Surface Water Use

(a) Surface Water Supply in acre feet (AF)

Cuc Basin Response: 3,838 (see Table 3 below)

Total Use

(a) Total Water Use in acre feet (AF)

Cuc Basin Response: Information is not available

Method Used to determine:

The three water producer parties in the Cucamonga Basin (CVWD, SAWCo, and the City of Upland) have service areas that extend beyond the boundaries of the Basin, and the specific proportion of their total water use within and outside the Basin is measured and maintained by each of the three pumpers in the Cucamonga Basin.

Change in Groundwater Storage

(a) Time period for change:

Start date: 10/01/2023

End date: 09/30/2024

(b) Change in storage in acre feet (AF)

Cuc Basin Response: (4,295) (see Table 2 below)

Method Used to determine:

The same basic methodology was used to calculate change in basin storage as was used in the Water Year 2023 report. The calculation is based on specific yield as defined in a 2020 report, “Chino Basin 2020 Safe Yield Recalculation Final Report” (Wildermuth Environmental, Inc.).

Results

Table 1: Total Groundwater Extraction by Agency for the Cucamonga Basin (AF)

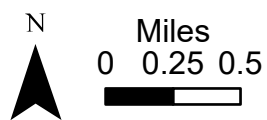
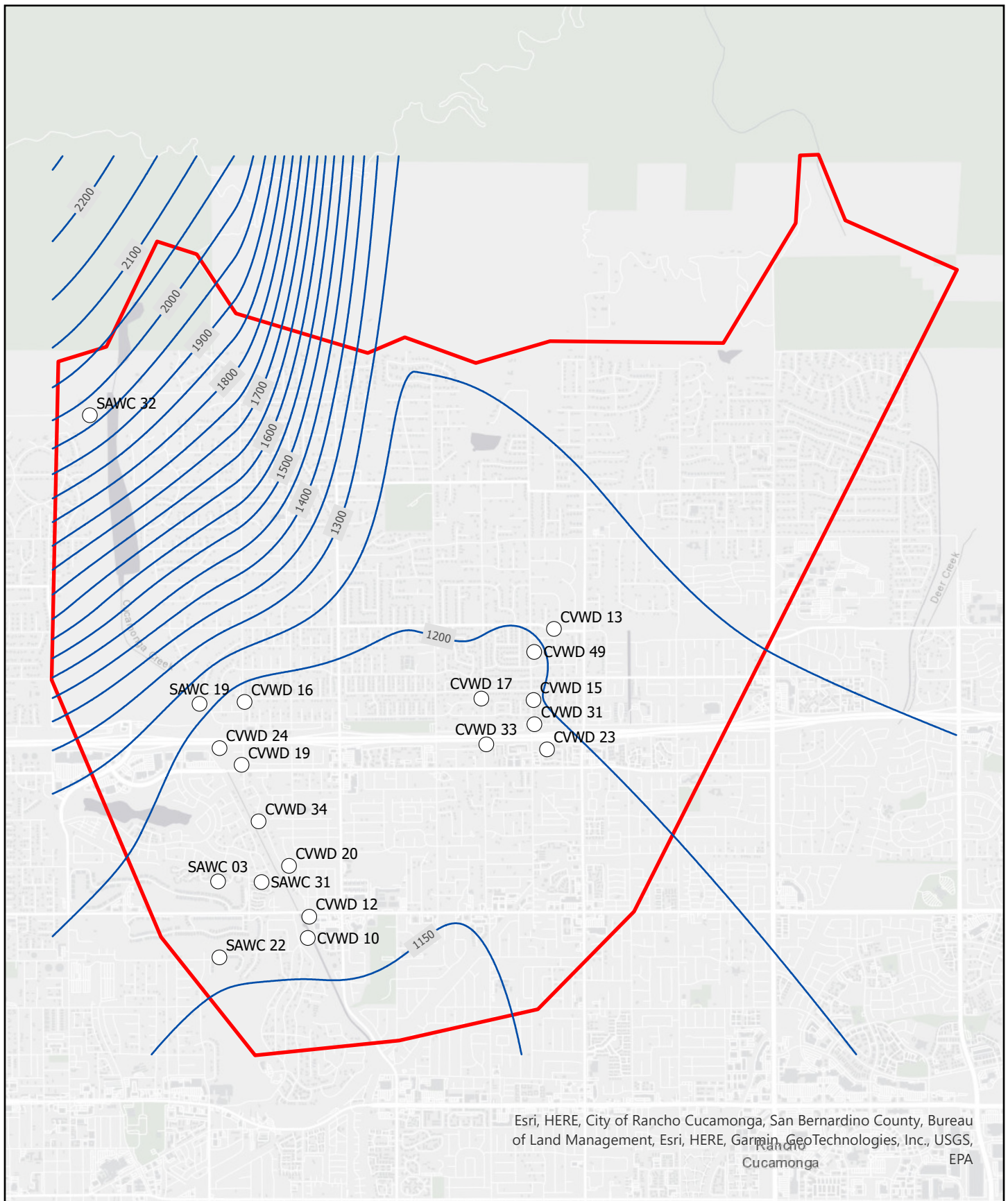
Total Production	
CVWD	7,330
SAWCo	2,823
Upland	1,807
Total	11,960

Table 2: Change in Storage for the Cucamonga Basin (AF)

Total Change in Storage
(4,295)

Table 3: Total Surface Water Supply for the Cucamonga Basin (AF)

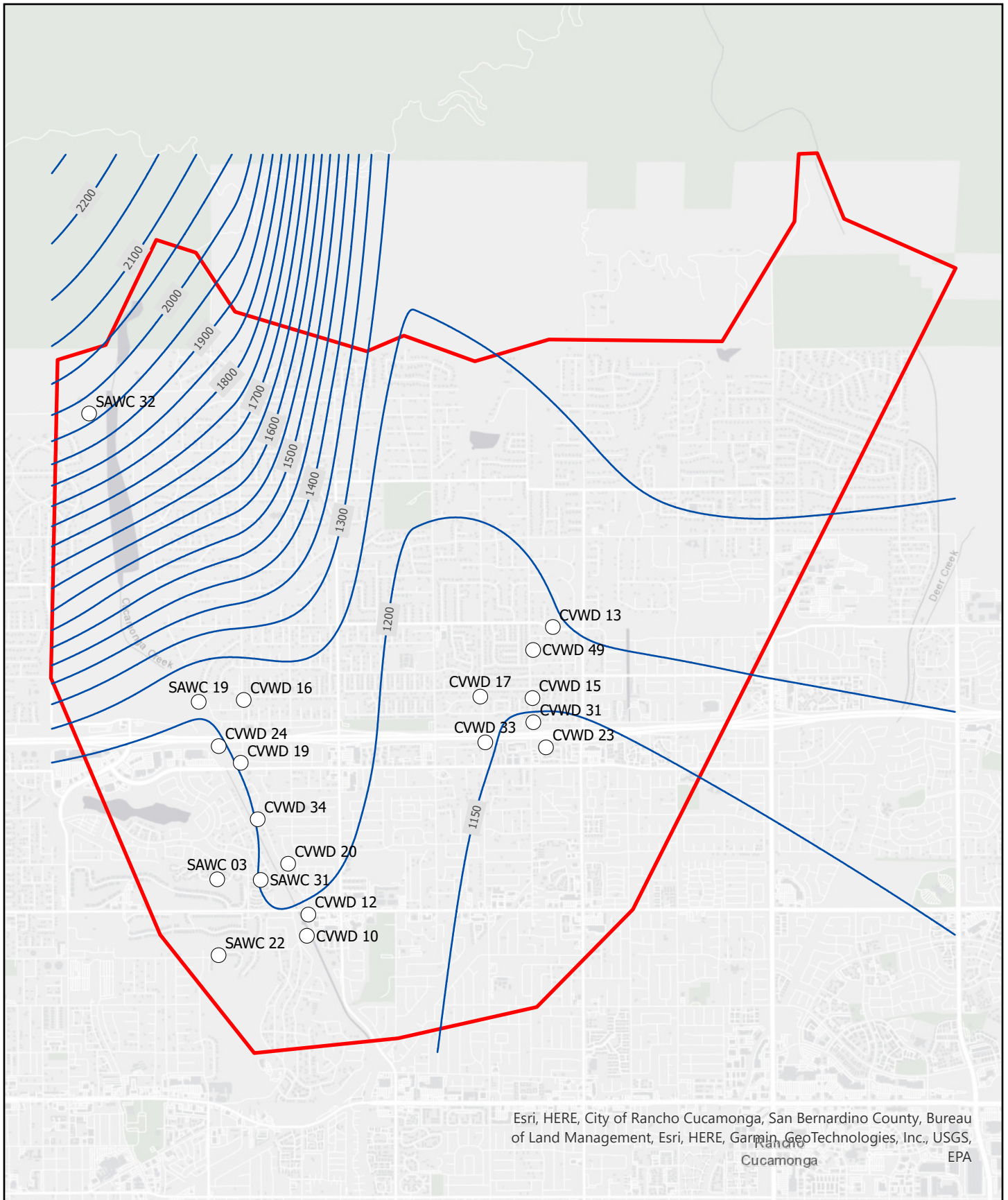
Total Surface Water Supply												
Oct 2023	Nov 2023	Dec 2023	Jan 2024	Feb 2024	Mar 2024	Apr 2024	May 2024	Jun 2024	Jul 2024	Aug 2024	Sep 2024	Total
152	93	168	233	398	711	551	484	385	334	212	117	3,838



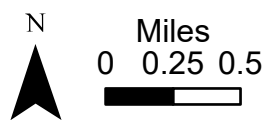
Legend

- Well
- Line of Equal Elevation (50 ft)
- ▭ Cucamonga Basin Adjudicated Boundary

Cucamonga Basin
Groundwater Elevations
October 2023



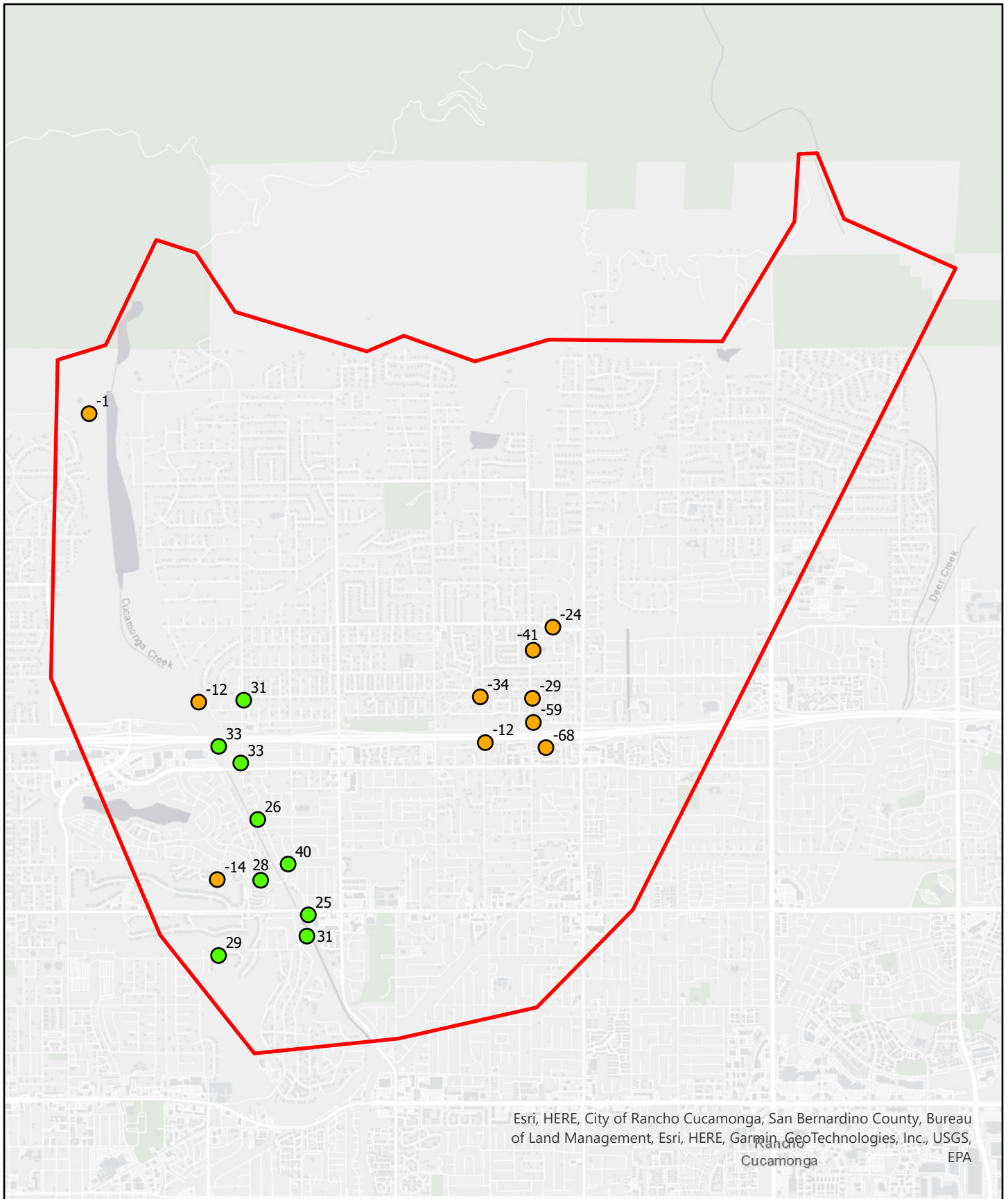
Esri, HERE, City of Rancho Cucamonga, San Bernardino County, Bureau of Land Management, Esri, HERE, Garmin, GeoTechnologies, Inc., USGS, Cucamonga, EPA



Legend

- Well
- Line of Equal Elevation (50 ft)
- ▭ Cucamonga Basin Adjudicated Boundary

Cucamonga Basin
Groundwater Elevations
September 2024



Cucamonga Basin

Groundwater Elevation
Difference (October 2023 to
September 2024)



Miles
0 0.25 0.5

Legend

- ▭ Cucamonga Basin Adjudicated Boundary
- Increase in Groundwater Elevation
- Decrease in Groundwater Elevation